

2021 Ontario Biodiversity Summit

Mainstreaming biodiversity within business

Thursday September 23, 2021

9:00am	Welcome and land acknowledgement <i>Ashley Fox, Ontario Power Generation & Ashlee Zelek, Ontario Stone, Sand & Gravel Association</i>
9:10am	Biodiversity action and recognition Keynote – the state of corporate conservation <i>Margaret O’Gorman, Wildlife Habitat Council</i>
9:40am	Biodiversity Certification for Business Setting the standard for corporate biodiversity impact <i>Rob Campbell, Wildlife Habitat Council</i> Ontario Power Generation case study <i>Ashley Fox</i> Leveraging data for storytelling and reporting <i>Josiane Bonneau, Wildlife Habitat Council</i>
10:20am	Break
10:25am	Biodiversity management Mainstreaming biodiversity in the aggregate industry <i>Ashlee Zelek</i> Biodiversity indicator reporting system <i>Chris Galway, Lafarge Canada</i> Biodiversity at Kirkland Lake Gold’s Detour Lake Mine <i>Natasha Dombrowski, Kirkland Lake Gold</i>
11:20am	Break
11:30 am	Moderated Q & A <i>Margaret O’Gorman, Wildlife Habitat Council</i> <i>Rob Campbell, Wildlife Habitat Council</i> <i>Josiane Bonneau, Wildlife Habitat Council</i> <i>Chris Galway, Lafarge Canada</i> <i>Natasha Dombrowski, Kirkland Lake Gold</i>
11:55am	Wrap-up and summary
12:00pm	Ends

Speaker biographies

Margaret O’Gorman operates at the intersection of business and nature. As President of the Wildlife Habitat Council, she helps companies find value in natural resources conservation and mainstream biodiversity across operations. She works with multinational corporations to develop integrated strategies to implement conservation projects to meet business needs and, in so doing, enhance ecosystems, connect communities and engage employees. She helps WHC members build conservation into their sustainability efforts and helps sustain conservation efforts through WHC’s signature Conservation Certification recognition, which serves to define the standard for corporate conservation worldwide. Prior to joining WHC, she served as the Executive Director of Conserve Wildlife Foundation of New Jersey where she transformed the little-known statewide non-profit into a well-respected and effective organization focused on rare and imperiled wildlife protection and recovery in the Garden State. Margaret’s extensive fundraising and development experience comes from almost a decade in lead development roles at New Jersey Future and the Pinelands Preservation Alliance. She began her career in education publishing, developing an expertise in secondary and university STEM education. Margaret is a compelling writer and speaker on the power of natural resource conservation to restore ecosystems, recover species, connect people and make a positive difference to business, people and planet. She is the author of Strategic Corporate Conservation Planning (Island Press) which lays out a road map for companies of all sizes to mainstream conservation and biodiversity. She holds a BSc in geology and geophysics from University College Ireland, Galway and a Masters in Micropaleontology from the University of Southampton, UK.



Rob Campbell is Sr. Manager, Conservation Strategies at the Wildlife Habitat Council, where he works closely with an array of member companies to deliver targeted products and services aimed at supporting each company’s pursuit of unique sustainability goals. In his role, Rob serves as liaison to member representatives across industry sectors, assuring they are kept apprised of information relative to their company’s initiatives. While earning a MS in Environmental Studies at the College of Charleston, Rob worked with the South Carolina Department of Natural Resources as an environmental educator to develop curriculum for local primary schools and to teach on estuarine topics. As a native Marylander, he has developed a knowledge base on coastal topics and aquatic ecosystems. Complimenting his passion for the natural world, Rob has extensively studied anthropogenic effects on the environment and holds a graduate certificate in Urban and Regional Development, as well as a BA in Economics and Psychology from St. Mary’s College of Maryland.



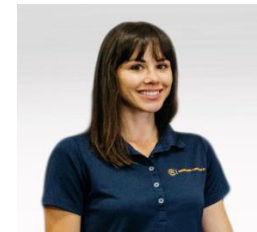
Josiane Bonneau, has occupied various positions within the Wildlife Habitat Council, as Biologist, Director of Field Programs, Senior Director, Conservation Strategy & Planning, and, currently, Chief Operating Officer, since joining the organization in 2005. Josiane focuses on the development of mechanisms and launch of industry strategies for corporations to embrace conservation as a tried and tested business value. With her team, she maintains a technical support system to translate this value into tailored contemporary conservation actions across the globe. Josiane specializes in natural resources management in the mining industry, linear infrastructure planning and remediation projects. She balances her passion for biodiversity with participation in industry committees and focus groups, including the Board of Director of the Right-of-Way Stewardship Council. While attending Université du Québec à Montréal, Josiane received a Bachelor of Science in Ecology. Prior to joining WHC, she dedicated close to a decade to the field of emergency management before joining the timber industry as a scientific consultant.



Chris Galway is a Senior Land Manager with Lafarge Canada Inc., focusing on Lafarge's land assets in the east GTA. Chris has been with the Lafarge Land Group since 2007, managing Lafarge's land assets across Ontario. His work at Lafarge supports the aggregate, concrete and cement product lines and includes acquiring and divesting lands, leading rehabilitation and restoration projects at Lafarge's aggregate properties, licencing and permitting of new aggregate lands for Lafarge, property taxes, as well as developing relationships with the communities Lafarge operates in. Chris has a Bachelor of Science in Geology from Carleton University and prior to joining Lafarge, Chris worked in the mining and exploration sector in Northern Ontario and Quebec, He also worked as a Client Manager for a large tech firm with focus on the federal government. Chris is a member of the OSSGA Land Use Committee, sits on the Niagara College Ecosystem Restoration PAC and was a member of the Lake Simcoe Source Water Protection Committee. Outside the office, Chris is an active Hockey Canada on-ice official and enjoys skiing and travelling with his wife and two children.



Natasha Dombrowski Natasha is a recognized Environmental Professional with ten years of progressive experience in the gold mining industry. In 2020, she was nominated for a Canadian Institute of Mining national award by her peers and was selected as one of the finalists among mining environmental professionals Canada-wide. As the Director, Environment and Sustainability for Kirkland Lake Gold's Canadian Operations, she specializes in complex environmental permitting, environmental project management, and regulator, Indigenous and community engagement and consultation. Her management and interpersonal skills have led her supporting the Company's Sustainability efforts through all her roles, including as a senior manager at the Macassa Mine, by successfully completing a term as Chair of the Social Responsibility Committee, and as Co-Chair of the Ontario Mining Association's Environmental Committee. Natasha currently leads all aspects of environmental management across all of Kirkland Lake Gold's Canadian Operations, including all environmental permit and approval application development, consultation and engagement, inspection and monitoring program development, incident and emergency response and support, and project planning and development support for the operation as a whole. Most recently, Natasha has been involved with comprehensive projects, including permitting and construction of a new tailings storage facility, permitting a new shaft construction project, the progressive rehabilitation and reclamation of the almost 100-year old Macassa tailings storage facility, which involved significant buttressing and deep-soil mixing to bring the facility to the current safety standard. These projects required successful navigation of local ordinances, and federal and provincial regulatory requirements, including satisfying indigenous consultation obligations, which lead to necessary statutory approvals issued in parallel with project schedules. Having demonstrated leadership in these complex permitting projects, she is currently leading permitting of the expansion of Detour Lake Mine's West Detour Project, as well as the North Tailings Storage Facility which requires Federal approvals, including Department of Fisheries and Oceans' Section 35 and Schedule 2 process, which is regarded as among the most comprehensive permitting processes in Canada. As part of the consultation requirements for this project, Natasha is leading the development of a strategic Consultation Plan consistent with the World Gold Council's Responsible Gold Mining Principles and the Mining Association of Canada's Towards Sustainable Mining guidance. From a community and engagement perspective, Natasha is involved in a variety of local volunteer initiatives such as the local Rotary Club, Meals on Wheels, and numerous other philanthropic initiatives locally that focus on building communities and protection of environment and biodiversity. She recently joined the Canadian Institute of Mining Diversity and Inclusion Committee.



Ashley Fox Ashley is an Assistant Environmental Advisor at Ontario Power Generation (OPG) and she helps administer the On-Site Biodiversity Conservation Program across OPG's 75 stations, and the Regional Biodiversity Program across Ontario, in partnership with conservation NGO's, Indigenous groups, and various stewardship organizations. Ashley sits on the Board of Directors for Friends of Second Marsh, and actively participates in local biodiversity conservation initiatives in Durham Region. Ashley holds a Master's degree in Environment and Business from the University of Waterloo. In her spare time, she enjoys bird watching, gardening, and hiking.



Ashlee Zelek Ashlee is Director of Environment and Education at the Ontario Stone, Sand & Gravel Association (OSSGA). Ashlee manages and promotes the environmental and educational objectives of the aggregate industry for its members, monitors and reports on environmental progress in the industry, and works to ensure the timely delivery of important changes to legislation with respect to non-renewable resource management. Ashlee is a Board Member of the Canadian Land Reclamation Association, and a member of the Species at Risk Public Advisory Committee as well as the Erin Environment and Sustainability Advisory Committee. She also represents OSSGA on the Ontario Biodiversity Council. Before joining OSSGA, Ashlee worked as a consultant assisting resource industries achieve environmental compliance, and in the mining industry where her role as Environmental Coordinator was to coordinate environmental programs, conduct extensive environmental monitoring programs, analyse and communicate environmental performance, and oversee mine reclamation reporting. Ashlee has a degree in Biology from McMaster University and a Master's degree in Environmental and Resource Studies from the University of Waterloo.



Program at a glance

THURSDAY OCTOBER 14, 2021

10:00am–12:00pm	Funding biodiversity and nature-based climate actions	Register now!
1:00pm – 3:00pm	Investing in natural infrastructure for biodiversity and climate resilient communities	Register now!

THURSDAY OCTOBER 21, 2021

Details coming soon! **Closing session**

To learn more about the **Ontario Biodiversity Council** please visit: www.ontariobiodiversitycouncil.ca

To register for other **2021 Ontario Biodiversity Summit** sessions please visit: www.ontariobiodiversitycouncil.ca/summit